



2026 PRODUCT CATALOG

Passenger and Light Truck Tyres (Europe)

ZEETEX LIMITED WARRANTY

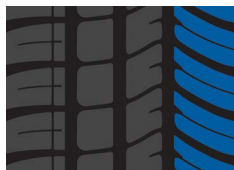


ZT2000

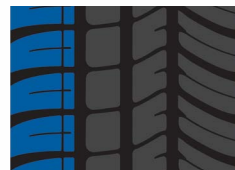
The ZEETEX ZT2000 is designed to deliver better traction & cornering while resisting irregular wear, giving you a smooth, long-lasting, & environmentally friendly ride.



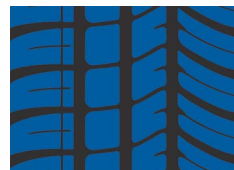
Optimal pitch variation of tread design reduces mono pitch sound & ensures better traction.



Larger & curved tread blocks on outer shoulder ensure better cornering.



Independent tread blocks on inner shoulders deliver better traction on wet surfaces during straight-line motion.



Enhanced stiffness of the tread blocks offers remarkable resistance against irregular wear, increasing tyre longevity.

Series	Size	Load Index / Speed Symbol	Max. Load	Max. Inflation Pressure	Rim Width	Section Width	Overall Diameter	Tread Depth	C	D	68dB/B
			kgs	psi	inches	mm	mm	mm			
80	145/80R13	75T	387	44	4.0	145	562	7.0	C	D	68dB/B
70	155/70R12	73T	365	44	4.5	157	523	7.2	C	D	68dB/B
	165/70R12	77T	412	44	5.0	170	537	7.4	C	D	68dB/B
	155/70R13	75T	387	44	4.5	157	548	7.2	C	D	68dB/B
	175/70R14	84T	500	44	5.0	177	602	7.4	C	C	68dB/B
65	175/65R13	80T	450	44	5.0	177	558	7.2	C	C	69dB/B
	165/65R14	79T	437	44	5.0	170	570	7.2	C	D	68dB/B
	175/65R15	84H	500	44	5.0	177	609	7.4	C	C	69dB/B
	215/65R15	96H	710	44	6.5	221	661	7.8	C	C	70dB/B
55	155/55R14	69V	325	44	5.0	162	526	7.0	C	D	68dB/B
	195/55R16	87V	545	44	6.0	201	620	7.4	C	C	69dB/B
	195/55R16	91V XL	615	44	6.0	201	620	7.4	C	C	71dB/B

ZT3000

The ZEETEX ZT3000 is summer pattern engineered to be more fuel efficient, delivering driving comfort & confident handling.



Asymmetrical pattern allows balanced handling characteristics to deliver a smoother ride.



Optimal pitch variation reduces road noise, thereby enhancing driving comfort.

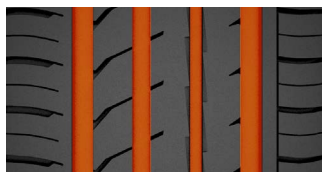


Circumferential & lateral grooves offer exceptional wet grip & traction, resulting in shorter braking distance.

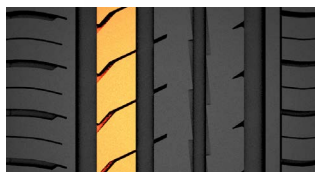
Series	Size	Load Index / Speed Symbol	Max. Load	Max. Inflation Pressure	Rim Width	Section Width	Overall Diameter	Tread Depth	C	C	A B C
			kgs	psi	inches	mm	mm	mm			
75	235/75R15	109T XL	1030	44	6.5	235	733	8.4	C	C	72dB/B
70	175/70R13	82T	475	44	5.0	177	576	7.6	C	C	68dB/A
	175/70R13	82H	475	44	5.0	177	576	7.6	C	C	68dB/B
	185/70R14	88H	560	44	5.5	189	616	7.6	C	C	68dB/B
	195/70R14	91T	615	44	6.0	201	630	7.6	C	C	68dB/B
	195/70R14	95H XL	690	44	6.0	201	630	7.6	C	C	68dB/A
	205/70R15	96H	710	44	6.0	209	669	7.8	C	C	68dB/A
	205/70R15	100H XL	800	44	6.0	209	669	7.8	C	C	68dB/A
	215/70R15	98T	750	44	6.5	221	683	8.0	C	C	68dB/A
65	165/65R13	77T	412	44	5.0	170	544	7.2	D	C	68dB/B
	175/65R14	82T	475	44	5.0	182	575	7.4	C	C	68dB/B
	185/65R14	90H XL	600	44	5.5	189	596	7.6	C	C	68dB/A
	185/65R15	88H	560	44	5.5	189	621	7.6	C	C	68dB/B
	195/65R15	91V	615	44	6.0	201	635	7.6	C	C	68dB/A
	195/65R15	95H XL	690	44	6.0	201	635	7.6	C	C	68dB/A
	205/65R15	94V	670	44	6.0	209	647	7.8	C	C	68dB/A
	205/65R15	99H XL	775	44	6.0	209	647	7.8	C	C	68dB/A
	215/65R16	102H XL	850	44	6.5	221	686	8.0	C	C	68dB/A
	215/65R16	102V XL	850	44	6.5	221	686	8.0	C	C	68dB/A
	215/65R17	98H	750	44	6.5	221	712	8.0	C	C	68dB/A
215/65R17	99T	775	44	6.5	221	712	8.0	C	C	68dB/A	
60	175/60R13	77H	412	44	5.0	177	540	7.6	D	C	68dB/B
	205/60R14	88H	560	44	6.0	209	602	7.6	C	C	68dB/A
	185/60R15	88H XL	560	44	5.5	189	603	7.6	C	C	68dB/A
	195/60R15	88H	560	44	6.0	201	615	7.6	C	C	68dB/A
	195/60R15	88V	560	44	6.0	201	615	7.6	C	C	68dB/A
	205/60R15	91V	615	44	6.0	209	627	7.6	C	C	68dB/A
	205/60R16	96H XL	710	44	6.0	209	652	7.8	C	C	68dB/A
	215/60R16	99H XL	775	44	6.5	221	664	8.0	C	C	68dB/A
225/60R16	102H XL	850	44	6.5	228	676	8.0	C	C	68dB/A	
55	205/55R16	91V	615	44	6.5	214	632	7.4	C	C	68dB/A
	205/55R16	94V XL	670	44	6.5	214	632	7.4	C	C	68dB/A

ZT5000 max

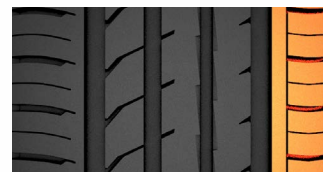
This next-gen passenger tyre offers enhanced performance during wet conditions. A closed-shoulder-block design allows better steering response & tyre longevity.



Wide positioning of four main grooves eject water at a faster rate for improved wet grip.



Angular sipes & rigid blocks on the inner side increase road grip & traction while cornering.



Closed-shoulder-block design enhances steering response & stability while preventing irregular wear.

Series	Size	Load Index / Speed Symbol	Max. Load	Max. Inflation Pressure	Rim Width	Section Width	Overall Diameter	Tread Depth	C	B	A B C
			kgs	psi	inches	mm	mm	mm			
70	175/70R14	88H XL	560	50	5.0	177	602	7.6	C	B	69dB/B
	185/70R14	88H	560	44	5.5	189	616	7.6	C	B	68dB/B
	195/70R14	95H XL	690	50	6.0	201	625	7.6	C	B	70dB/B
	205/70R15	96H	710	44	6.0	209	664	7.8	C	B	69dB/B
	215/70R15	98H	750	44	6.5	221	678	7.8	C	B	69dB/B
65	165/65R14	79H	437	44	5.0	170	565	7.0	D	B	68dB/B
	175/65R14	82H	475	44	5.0	177	584	7.6	D	B	68dB/B
	185/65R14	86H	530	44	5.5	189	596	7.6	C	B	68dB/B
	185/65R15	88H	560	44	5.5	189	616	7.8	C	B	68dB/B
	195/65R15	91H	615	44	6.0	201	630	7.8	C	B	69dB/B
	205/65R15	94V	670	44	6.0	209	642	7.8	C	B	69dB/B
	205/65R16	95V	690	44	6.0	209	672	7.8	C	B	69dB/B
60	175/60R15*	81H	462	44	5.0	177	586	7.8	C	B	68dB/B
	185/60R15	84H	500	44	5.5	189	598	7.8	C	B	68dB/B
	195/60R15	88H	560	44	6.0	201	610	7.8	C	B	69dB/B
	205/60R15	91V	615	44	6.0	209	622	7.8	C	B	69dB/B
	195/60R16	89H	580	44	6.0	201	640	7.8	C	B	69dB/B
	205/60R16	92V	630	44	6.0	209	648	7.8	C	B	69dB/B
	215/60R16	99V XL	775	50	6.5	221	664	7.8	C	B	70dB/B
	225/60R16	102V XL	850	50	6.5	228	671	7.8	C	B	70dB/B
	215/60R17	96H	710	44	6.5	221	690	7.8	C	B	69dB/B
55	225/60R17	99V	775	44	6.5	228	697	8.3	C	B	69dB/B
	185/55R15*	82V	475	44	6.0	194	580	7.8	C	B	68dB/B

* Newly added sizes

Upcoming sizes

Series	Size	Load Index / Speed Symbol
80	155/80 R13	79T
70	145/70 R13	71T
	165/70 R13	79T
	165/70 R14	81T
65	155/65 R13	73T
	155/65 R14	75T

Series	Size	Load Index / Speed Symbol
60	185/60 R14	82H
	165/60 R14	75H
	155/60 R15	74T
	175/60 R16	82H
55	185/55 R14	80V
50	165/50 R16	77V XL

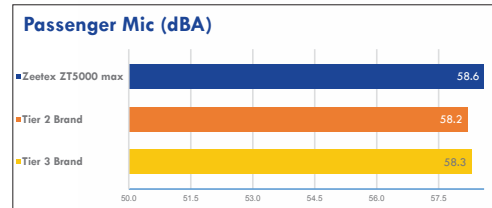
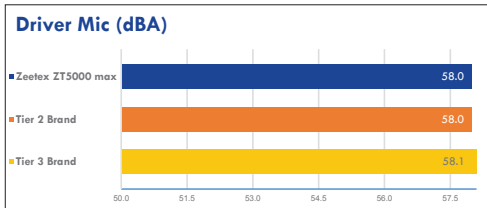
ZT5000 max



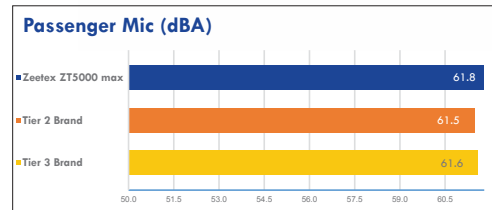
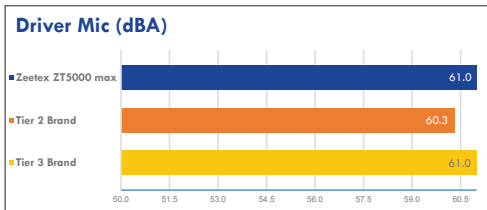
Performance results against Tier 2 & Tier 3 brands tested in IDIADA, Spain

Tire size tested: 225/60R17 99V

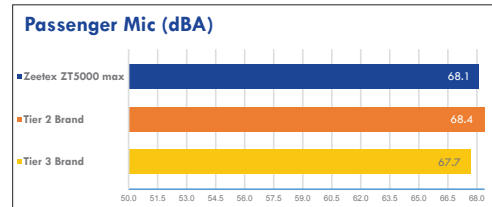
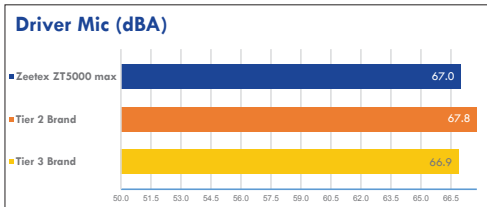
Internal Noise on Smooth Road @ 37.2 mph (60 kph)



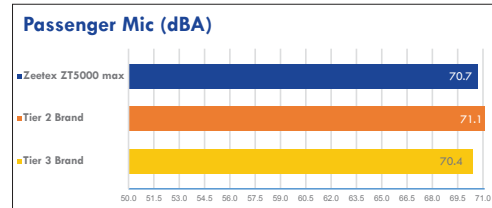
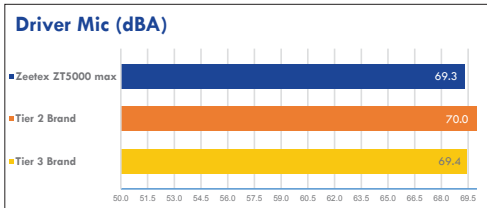
Internal Noise on Smooth Road @ 49.7 mph (80 kph)



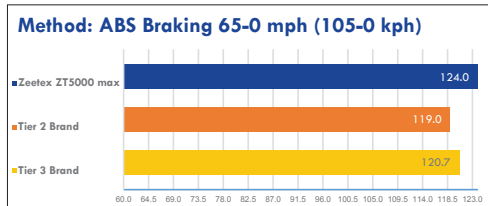
Internal Noise on Rough Road @ 37.2 mph (60 kph)



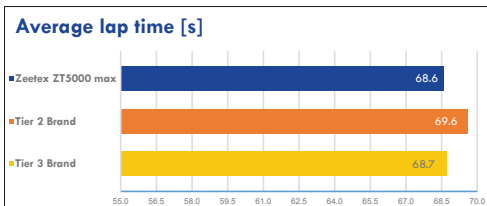
Internal Noise on Rough Road @ 49.7 mph (80 kph)



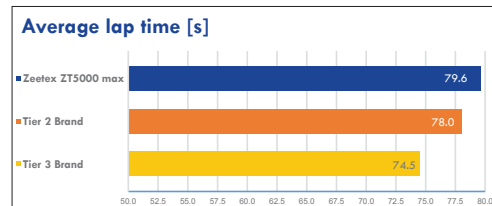
Dry Braking Distance in Feet



Dry Handling



Wet Handling



HP1000

The ZEETEX HP1000 is designed for superior driving performance & optimized handling & steering accuracy, offering you a controlled & confident ride.



Serrations on the groove wall reduce pipe-resonance noise, making it an ultra-silent tyre.



Wide circumferential & lateral grooves offer outstanding resistance against aquaplaning.



Asymmetric tread design & solid shoulder blocks allow quick response during turns at high-speed.

Series	Size	Load Index / Speed Symbol	Max. Load	Max. Inflation Pressure	Rim Width	Section Width	Overall Diameter	Tread Depth	C	B	A _{BC}
			kgs	psi	inches	mm	mm	mm			
60	235/60R18	107V XL	975	44	7.0	240	739	8.2	C	B	69dB/A
	235/60R18	107W XL	975	44	7.0	240	739	8.2	D	D	68dB/A
55	195/55R15	85V	515	44	6.0	201	595	7.4	D	D	68dB/A
	195/55R15	89V XL	580	44	6.0	201	595	7.4	D	D	68dB/A
	205/55R15	88V	560	44	6.5	214	607	7.4	D	D	68dB/A
	205/55ZR16	91W	615	44	6.5	214	632	8.0	D	D	68dB/A
	215/55ZR16	97W XL	730	44	7.0	226	642	8.0	C	D	68dB/A
	215/55ZR16	97Y XL	730	44	7.0	226	642	8.0	D	D	68dB/A
	225/55ZR16	99W XL	775	44	7.0	233	654	7.8	C	B	69dB/A
	215/55ZR17	94W	670	44	7.0	226	668	8.0	C	D	68dB/A
50	225/55R17	97V	730	44	7.0	233	680	7.8	C	B	69dB/B
	195/50R16	88V XL	560	44	6.0	201	602	7.2	D	D	68dB/A
	205/50ZR16	87W	545	44	6.5	214	612	8.0	D	D	68dB/A
	205/50ZR17	93W XL	650	44	6.5	214	638	8.0	D	D	68dB/A
	215/50ZR17	95W XL	690	44	7.0	226	648	7.6	C	D	68dB/A
	225/50ZR17	94W	670	44	7.0	233	658	7.8	C	B	68dB/A
	225/50ZR17	98Y XL	750	44	7.0	233	658	7.8	D	D	68dB/A
	225/50R18	95V	690	44	7.0	240	739	7.8	D	D	68dB/A
45	225/50R18	99V XL	775	44	7.0	240	739	7.8	C	B	68dB/A
	235/50ZR18	97W	730	44	7.5	245	693	8.0	C	B	69dB/B
	205/45ZR16	87W XL	545	44	7.0	206	590	8.0	D	D	68dB/A
	205/45ZR17	88W XL	560	44	7.0	206	616	7.8	D	D	68dB/A
	215/45ZR17	91W XL	615	44	7.0	213	626	7.6	D	D	68dB/A
	225/45ZR17	94W XL	670	44	7.5	225	634	7.6	C	B	68dB/A
	225/45ZR17	94Y XL	670	44	7.5	225	634	7.6	D	D	68dB/A
	235/45ZR17	97W XL	730	44	8.0	235	644	7.8	C	B	69dB/A
40	245/45ZR17	95W	690	44	8.0	243	652	8.2	C	B	69dB/B
	225/45ZR18	95Y XL	690	44	7.5	225	651	7.6	C	B	69dB/A
	245/45ZR18	100Y XL	800	44	8.0	243	677	8.0	C	B	69dB/A
	245/45ZR19	102Y XL	850	44	8.0	243	703	8.0	C	B	69dB/A
	205/40ZR17	84W XL	500	44	7.5	212	596	7.6	D	D	68dB/A
	245/40ZR17	91W	615	44	8.5	241	620	8.0	D	B	69dB/B
	225/40ZR18	92Y XL	630	44	8.0	230	637	7.6	D	D	69dB/A
40	235/40ZR18	95Y XL	690	44	8.5	241	645	7.8	C	B	69dB/A
	245/40ZR18	97Y XL	730	44	8.5	248	653	8.0	C	B	69dB/A

For High-performance & Luxury Vehicles

SUMMER

HP1000



Series	Size	Load Index / Speed Symbol	Max. Load	Max. Inflation Pressure	Rim Width	Section Width	Overall Diameter	Tread Depth			
			kgs	psi	inches	mm	mm	mm			
40	245/40ZR19	98Y XL	750	44	8.5	248	679	8.0	C	B	69dB/A
	255/40ZR19	100Y XL	800	44	9.0	260	687	8.2	C	B	69dB/A
	275/40ZR19	105Y XL	925	44	9.5	278	703	8.4	C	B	70dB/A
	245/40ZR20	99Y XL	775	44	8.5	248	704	8.0	C	B	69dB/A
35	215/35ZR18	84W XL	500	44	7.5	218	607	7.8	D	D	68dB/A
	265/35ZR18	97W XL	730	44	9.0	248	653	8.2	C	B	69dB/A
	275/35ZR18	99Y XL	775	44	9.5	278	649	8.4	C	B	70dB/A
	225/35ZR19	88Y XL	560	44	8.0	230	641	7.8	D	D	69dB/A
	235/35ZR19	91Y XL	615	44	8.5	241	647	7.6	D	B	69dB/A
	245/35ZR19	93Y XL	650	44	8.5	248	655	8.0	D	B	69dB/A
	255/35ZR19	96Y XL	710	44	9.0	260	661	8.0	C	B	69dB/A
	265/35ZR19	98Y XL	750	44	9.0	271	669	8.2	C	B	70dB/A
	225/35ZR20	93Y XL	650	44	8.0	230	666	7.8	D	D	69dB/A
	245/35ZR20	95Y XL	690	44	8.5	248	680	8.0	C	B	69dB/A
	255/35ZR20	97Y XL	730	44	9.0	260	686	8.0	C	B	69dB/A
275/35ZR20	102Y XL	850	44	9.5	278	700	8.4	C	B	70dB/A	
30	285/30ZR19	98Y XL	750	44	10.0	290	655	8.2	C	B	70dB/A

For High-performance & Luxury Vehicles

SUMMER

HP5000 max

This next-gen ultra-high performance tyre is designed for the modern-day driver with an innovative tread & sidewall design & a unique "helical" main groove that facilitates quick water evacuation. The HP5000 max features a soft tread appearance to deliver a very quiet & comfortable ride.






Ultra-modern tread & sidewall design suitable for modern vehicles & roads.



All new "helical" main groove combined with three main grooves allow rapid water ejection by adding an extra swirling effect.



Soft tread compound delivers a very quiet ride.

Series	Size	Load Index / Speed Symbol	Max. Load	Max. Inflation Pressure	Rim Width	Section Width	Overall Diameter	Tread Depth			
			kgs	psi	inches	mm	mm	mm			
55	195/55R15	89V XL	580	50	6.0	206	593	7.8	C	B	70dB/B
	195/55R16	91V XL	615	50	6.0	201	615	7.8	C	B	70dB/B
	205/55R16	94W XL	670	50	6.5	214	632	7.8	C	B	70dB/B
	215/55R16	97W XL	730	50	7.0	226	637	7.8	C	B	70dB/B
	205/55R17*	95V XL	690	50	6.5	214	653	7.8	C	B	70dB/A
	205/55R17*	95W XL	690	50	6.5	214	653	7.8	C	A	69dB/A
	215/55R17	98W XL	750	50	7.0	226	669	7.8	C	B	70dB/B
	225/55R17	101W XL	825	50	7.0	233	675	7.8	C	B	70dB/B
	235/55R17	103V XL	875	50	7.5	245	685	7.8	C	A	69dB/A
235/55R17	103W XL	875	50	7.5	245	685	7.8	C	B	70dB/B	
50	195/50R15*	82V	475	44	6.0	201	572	7.8	D	B	69dB/A
	195/50R16	88V XL	560	50	6.0	201	597	7.8	C	B	70dB/B
	205/50R16	91W XL	615	50	6.5	223	608	7.8	C	B	70dB/B
	205/50R17	93Y XL	650	50	6.5	214	633	7.8	C	B	70dB/B
	215/50R17	95W XL	690	50	7.0	226	648	7.8	C	B	70dB/B
	225/50R17	98W XL	750	50	7.0	233	658	7.8	C	B	70dB/B
	225/50R18	99W XL	775	50	7.0	233	678	7.8	C	B	70dB/B
	235/50R18	101Y XL	825	50	7.5	245	688	7.8	C	B	70dB/B
45	205/45R16	87W XL	545	50	7.0	206	590	7.8	C	B	70dB/B
	205/45R17	88W XL	560	50	7.0	206	616	7.8	C	B	70dB/B
	215/45R17	91Y XL	615	50	7.0	213	626	7.8	C	B	70dB/B
	225/45R17	94Y XL	670	50	7.5	225	634	7.8	C	B	70dB/B
	235/45R17	97Y XL	730	50	8.0	236	644	7.8	C	B	70dB/B
	245/45R17	99Y XL	775	50	8.0	243	652	7.8	C	B	70dB/B
	225/45R18	95Y XL	690	50	7.5	225	659	7.8	C	B	70dB/B
	235/45R18	98Y XL	750	50	8.0	247	669	7.8	C	B	70dB/B
	245/45R18	100Y XL	800	50	8.0	243	677	7.8	C	B	70dB/B
	225/45R19*	96Y XL	710	50	7.5	225	685	8	C	B	70dB/A
245/45R19	102Y XL	850	50	8.0	243	703	8.0	C	B	70dB/B	
40	245/40R17	95Y XL	690	50	8.5	248	628	7.8	C	B	70dB/B
	225/40R18	92Y XL	630	50	8.0	230	637	7.8	C	B	70dB/B
	235/40R18	95Y XL	690	50	8.5	241	640	7.8	C	B	70dB/B
	245/40R18	97Y XL	730	50	8.5	260	648	7.8	C	B	70dB/B
	225/40R19	93Y XL	650	50	8.0	230	663	8.0	C	B	70dB/B
	235/40R19*	96Y XL	710	50	8.5	241	666	8	C	B	70dB/A

For High-performance & Luxury Vehicles

SUMMER

HP5000 max



Series	Size	Load Index / Speed Symbol	Max. Load	Max. Inflation Pressure	Rim Width	Section Width	Overall Diameter	Tread Depth			
			kgs	psi	inches	mm	mm	mm			
40	245/40R19	98Y XL	750	50	8.5	260	677	8.0	C	B	70dB/B
	255/40R19	100Y XL	800	50	9.0	260	687	8.0	C	B	71dB/B
	275/40R19	105Y XL	925	50	9.5	278	703	8.0	C	B	71dB/B
	245/40R20	99Y XL	775	50	8.5	248	699	8.0	C	B	70dB/B
	255/40R20	101Y XL	825	50	9.0	260	707	8.0	C	B	71dB/B
35	255/35R18	94Y XL	670	50	9.0	260	630	7.8	C	B	71dB/B
	265/35R18	97Y XL	730	50	9.5	283	636	8.0	C	B	71dB/B
	275/35R18	99Y XL	775	50	9.5	288	650	8.0	C	B	71dB/B
	235/35R19	91Y XL	615	50	8.5	257	642	8.0	C	B	70dB/B
	245/35R19	93Y XL	650	50	8.5	248	650	8.0	C	B	70dB/B
	255/35R19	96Y XL	710	50	9.0	260	661	8.0	C	B	71dB/B
	265/35R19	98Y XL	750	50	9.5	271	669	8.0	C	B	71dB/B
	275/35R19	100Y XL	800	50	9.5	278	670	8.0	C	B	71dB/B
	235/35R20	92Y XL	630	50	8.5	241	667	8.0	C	B	70dB/B
	245/35R20	95Y XL	690	50	8.5	257	675	8.0	C	B	70dB/B
	255/35R20	97Y XL	730	50	9.0	260	681	8.0	C	B	71dB/B
	265/35R20	99Y XL	775	50	9.5	271	690	8.0	C	B	71dB/B
	275/35R20	102Y XL	850	50	9.5	278	695	8.0	C	B	71dB/B
	295/35R20	105Y XL	925	50	10.5	301	709	8.3	C	B	73dB/B
245/35R21	96Y XL	710	50	8.5	248	705	8.0	C	B	70dB/B	
30	265/30R19	93Y XL	650	50	9.5	271	643	8.0	C	B	71dB/B
	275/30R20	97Y XL	730	50	9.5	287	675	8.0	C	B	71dB/B

* Newly added sizes

Upcoming sizes

Series	Size	Load Index / Speed Symbol
50	235/50R17	100W XL
45	195/45R16	84V XL
	215/45R16	90W XL
	215/45R18	93W XL
	255/45R18	103W XL
40	215/40R17	87Y XL
	205/40R18	86W XL
	215/40R18	89W XL
	255/40R18	99W XL
35	215/35R19	85Y XL

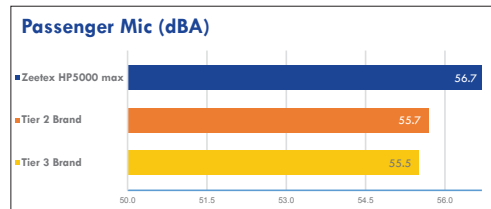
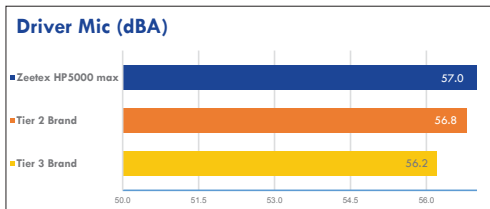
HP5000 max



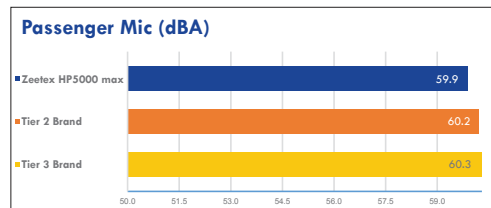
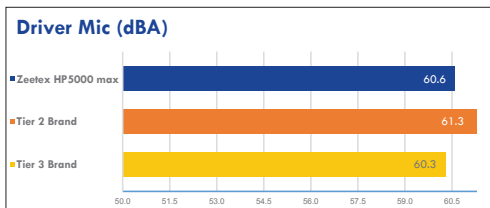
Performance results against Tier 2 & Tier 3 brands tested in IDIADA, Spain

Tire size tested: 225/55R17 101W XL

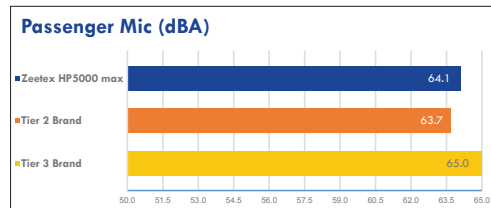
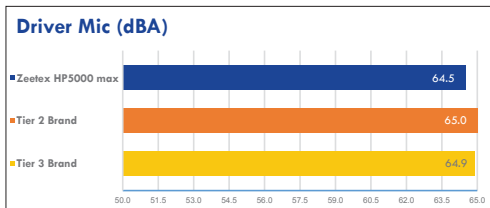
Internal Noise on Smooth Road @ 37.2 mph (60 kph)



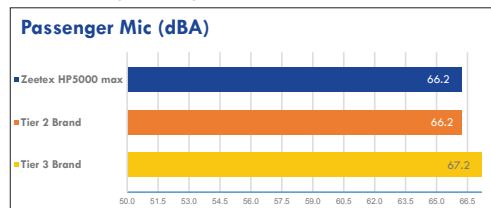
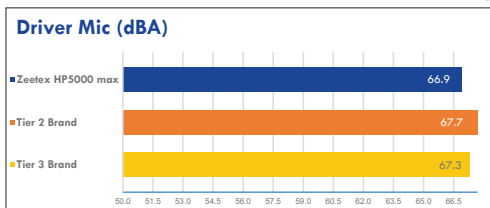
Internal Noise on Smooth Road @ 49.7 mph (80 kph)



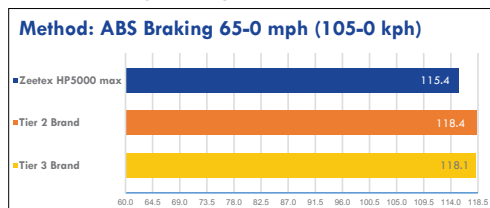
Internal Noise on Rough Road @ 37.2 mph (60 kph)



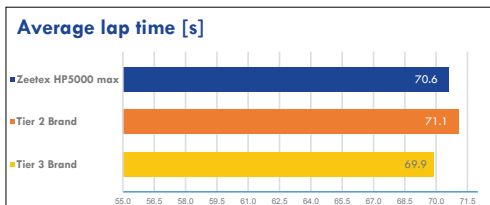
Internal Noise on Rough Road @ 49.7 mph (80 kph)



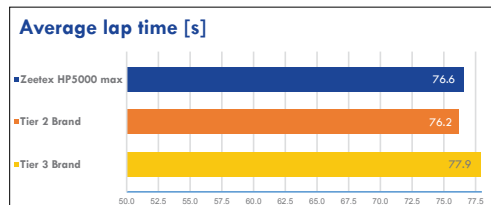
Dry Braking Distance in Feet



Dry Handling



Wet Handling



SU1000

The ZEETEX SU1000 is engineered with comfort in mind, working quietly & confidently on all road surfaces.



Serrations on the groove wall reduce pipe-resonance, delivering an exceptionally silent ride.



Absorption of road inputs delivers extraordinary driving comfort.



Improved vehicle stability & reduced braking distance in wet & dry conditions.

Series	Size	Load Index / Speed Symbol	Max. Load	Max. Inflation Pressure	Rim Width	Section Width	Overall Diameter	Tread Depth	C	B	A B C
			kgs	psi	inches	mm	mm	mm			
70	265/70R18	116H	1250	51	8.0	248	829	8.8	C	B	71dB/B
65	235/65R17	104H	900	51	7.0	240	738	8.2	C	C	71dB/B
	235/65R17	108V XL	1000	51	7.0	240	738	8.2	C	C	71dB/B
	245/65R17	107T	975	51	7.0	248	750	8.0	C	C	71dB/B
60	245/60R18	105H	925	51	7.0	248	751	8.4	C	C	71dB/B
	245/60R18	105V	925	51	7.0	248	751	8.4	C	C	71dB/B
	285/60R18	120H XL	1400	51	8.5	292	799	9.0	C	B	71dB/A
	275/60R20	115H	1215	51	8.0	279	838	8.8	C	B	71dB/B
55	235/55R18	104V XL	900	51	7.5	245	715	8.0	C	B	71dB/B
	235/55ZR18	104W XL	900	51	7.5	245	715	8.0	C	C	71dB/B
	255/55R18	109V XL	1030	51	8.0	265	737	8.4	C	C	71dB/B
	255/55ZR18	109W XL	1030	51	8.0	265	737	8.4	C	C	71dB/B
	235/55R19	101H	825	51	7.5	245	741	8.0	C	C	71dB/B
	235/55ZR19	105W XL	925	51	7.5	245	741	8.0	C	C	71dB/B
	255/55R19	111V XL	1090	51	8.0	265	763	9.0	C	C	71dB/B
	255/55ZR19	111W XL	1090	51	8.0	265	763	9.0	C	C	71dB/B
	275/55R19	111V	1090	51	8.5	284	785	8.8	C	B	71dB/B
	235/55R20	102H	850	51	7.5	245	766	8.0	C	C	71dB/B
50	275/55R20	117V XL	1285	51	8.5	284	810	8.8	C	B	71dB/B
	255/50ZR19	107W XL	975	51	8.0	265	739	8.4	C	B	71dB/B
	245/50R20	102V	850	51	7.5	253	754	8.0	C	B	71dB/B
	265/50R20	112V XL	1120	51	8.5	277	774	8.4	C	B	71dB/B
45	285/50R20	116V XL	1250	51	9.0	297	794	8.4	C	B	71dB/A
	245/45ZR20	103Y XL	875	51	8.0	243	728	8.0	C	C	71dB/B
	255/45R20	105V XL	925	51	8.5	255	738	8.2	C	B	71dB/B
	275/45R20	110V XL	1060	51	9.0	273	756	8.6	C	B	71dB/B
40	285/45R22	114V XL	1180	51	9.5	285	815	8.8	C	B	71dB/A
	275/40ZR20	106Y XL	950	51	9.5	278	728	8.4	C	B	71dB/B
	305/40ZR22	114W XL	1180	51	11.0	313	803	9.0	C	B	71dB/A
35	295/35R21	107V XL	975	51	10.5	301	739	9.0	C	B	71dB/A
	265/35ZR22	102W XL	850	51	9.0	271	745	8.2	C	B	71dB/B
	295/35R24	110V XL	1060	51	10.5	301	816	8.2	C	B	71dB/A
	305/35R24	114V XL	1180	51	11.0	313	824	9.0	C	B	71dB/A
30	255/30ZR22	95W XL	690	51	9.0	260	713	8.0	C	B	71dB/B

SU5000 max

The SU5000 max is a next-gen SUV tyre engineered with a modern sipe style for a quiet & comfortable drive. Wide ribs are positioned for enhanced contact area to improve performance & fuel efficiency.



Positioning of extra wide ribs with four main grooves enhance road contact area for better performance & fuel efficiency.



Impressively engineered with a modern sipe style & positioning for a quiet & comfortable drive.



Sporty aesthetic & performance delivers a striking aesthetic seen on modern SUVs & Crossovers.

Series	Size	Load Index / Speed Symbol	Max. Load	Max. Inflation Pressure	Rim Width	Section Width	Overall Diameter	Tread Depth	B	B	ABC
			kgs	psi	inches	mm	mm	mm			
65	225/65R17	102H	850	44	6.5	230	719	8.0	B	B	69dB/B
	235/65R17	108V XL	1000	50	7.0	240	733	8.0	B	B	70dB/B
	275/65R18	116H	1250	44	8.0	279	810	8.0	B	B	70dB/B
60	205/60R17*	97W XL	730	50	6.0	209	678	7.8	C	B	70dB/B
	235/60R17	102V	850	44	7.0	240	709	8.0	B	B	69dB/B
	235/60R18	103V	875	44	7.0	240	734	8.0	B	B	69dB/B
	245/60R18	105V	925	44	7.0	248	751	8.0	B	B	69dB/B
	255/60R18	112W XL	1120	50	7.5	260	763	8.0	B	B	71dB/B
	265/60R18	110V	1060	44	8.0	272	770	8.0	B	B	70dB/B
	285/60R18	116V	1250	44	8.5	310	799	9.0	B	B	72dB/B
	275/60R20	115V	1215	44	8.0	279	833	9.0	B	B	70dB/B
55	215/55R18	99V XL	775	50	7.0	226	693	7.8	B	A	70dB/B
	215/55R18	99W XL	775	50	7.0	226	693	7.8	C	B	69dB/A
	225/55R18*	98V	750	44	7.0	233	700	8.0	C	B	69dB/B
	225/55R18*	102Y XL	850	50	7.0	233	700	8.0	B	B	70dB/B
	235/55R18	104Y XL	900	50	7.5	245	710	8.0	B	B	70dB/B
	255/55R18	109Y XL	1030	50	8.0	265	732	8.0	B	B	71dB/B
	225/55R19*	103Y XL	875	50	7.0	233	731	8.0	B	B	70dB/B
	235/55R19	105Y XL	925	50	7.5	245	736	8.0	B	B	70dB/B
	255/55R19	111W XL	1090	50	8.0	265	763	8.0	B	B	71dB/B
	275/55R19	111W	1090	44	8.5	304	780	8.3	B	B	70dB/B
	235/55R20	102W	850	44	7.5	245	761	8.0	B	B	69dB/B
	255/55R20	110Y XL	1060	50	8.0	265	783	8.0	B	B	71dB/B
	265/55R20*	113V XL	1150	50	8.5	287	798	8.0	C	B	69dB/A
275/55R20	117V XL	1285	50	8.5	290	805	9.0	B	B	71dB/B	
50	235/50R19	103W XL	875	50	7.5	245	719	8.0	B	B	70dB/B
	255/50R19	107W XL	975	50	8.0	265	734	8.0	B	B	71dB/B
	265/50R19	110Y XL	1060	50	8.5	277	744	8.0	B	B	71dB/B
	245/50R20	105W XL	925	50	7.5	253	749	8.0	B	B	70dB/B
	255/50R20	109Y XL	1030	50	8.0	265	759	8.0	B	B	71dB/B
	265/50R20	111V XL	1090	50	8.5	277	769	8.0	B	B	71dB/B
	275/50R20	113W XL	1150	50	8.5	301	779	8.3	B	B	71dB/B
	285/50R20	116V XL	1250	50	9.0	297	794	9.0	B	B	73dB/B
	275/50R21	113Y XL	1150	50	8.5	284	809	8.3	B	B	71dB/B
	275/50R22	115V XL	1215	50	8.5	284	830	8.3	B	B	71dB/B

SU5000 max



Series	Size	Load Index / Speed Symbol	Max. Load	Max. Inflation Pressure	Rim Width	Section Width	Overall Diameter	Tread Depth			
			kgs	psi	inches	mm	mm	mm			
45	235/45R19*	99Y XL	775	50	8.0	236	695	8.0	C	B	69dB/A
	245/45R20	103Y XL	875	50	8.0	243	723	8.0	B	B	70dB/B
	255/45R20	105W XL	925	50	8.5	268	734	8.0	B	B	71dB/B
	265/45R20	108Y XL	1000	50	9.0	266	746	8.0	B	B	71dB/B
	275/45R20	110Y XL	1060	50	9.0	273	751	8.3	B	B	71dB/B
	265/45R21*	108Y XL	1000	50	9.0	266	766	8.0	C	B	69dB/A
	275/45R21	110Y XL	1060	50	9.0	273	781	8.3	B	B	71dB/B
40	285/45R22	114W XL	1180	50	9.5	285	815	9.0	B	B	73dB/B
	275/40R20	106Y XL	950	50	9.5	278	728	8.0	B	B	71dB/B
	265/40R21	105Y XL	925	50	9.5	282	740	8.0	B	B	71dB/B
	295/40R21	111Y XL	1090	50	10.5	301	769	8.3	B	B	73dB/B
	265/40R22	106Y XL	950	50	9.5	271	771	8.0	B	B	71dB/B
	275/40R22	108Y XL	1000	50	9.5	278	779	8.3	B	B	71dB/B
35	285/40R22	110Y XL	1060	50	10.0	303	781	8.3	B	B	73dB/B
	305/40R22	114W XL	1180	50	11.0	319	803	9.0	B	B	73dB/B
	315/35R20	110Y XL	1060	50	11.0	320	728	9.0	B	B	73dB/B
	295/35R21	107Y XL	975	50	10.5	301	739	8.3	B	B	73dB/B
	265/35R22	102Y XL	850	50	9.5	271	740	8.0	B	B	71dB/B
	285/35R22	106Y XL	950	50	10.0	297	758	8.3	B	B	73dB/B

* Newly added sizes

Upcoming sizes

Series	Size	Load Index / Speed Symbol
60	225/60R18	100H
40	265/40R20	104W XL

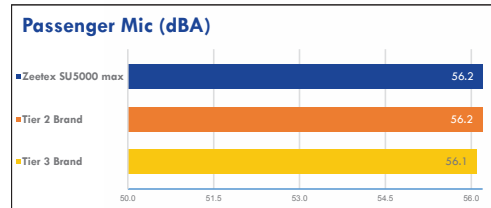
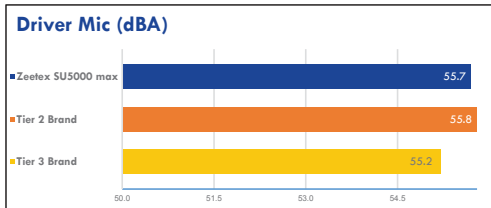
SU5000 max



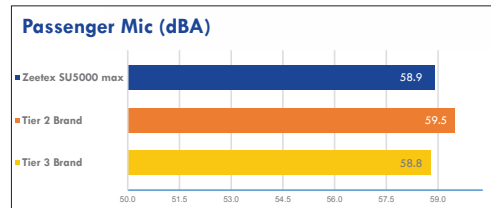
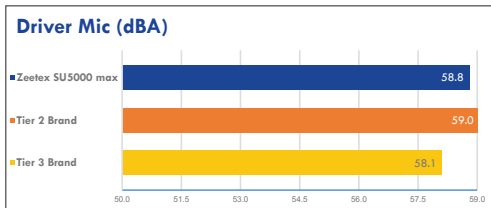
Performance results against Tier 2 & Tier 3 brands tested in IDIADA, Spain

Tire size tested: 245/45R20 103Y XL

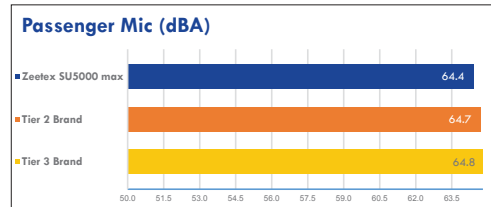
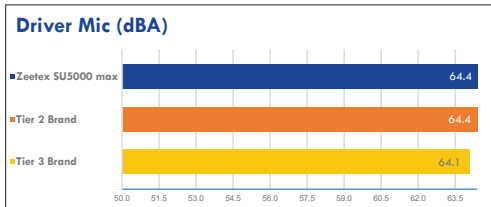
Internal Noise on Smooth Road @ 37.2 mph (60 kph)



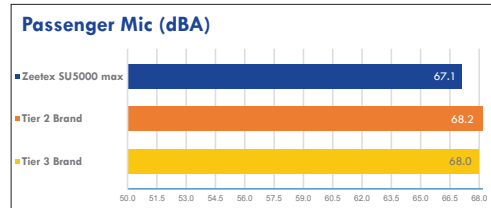
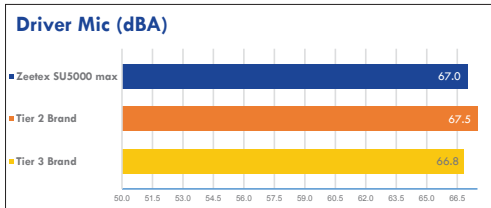
Internal Noise on Smooth Road @ 49.7 mph (80 kph)



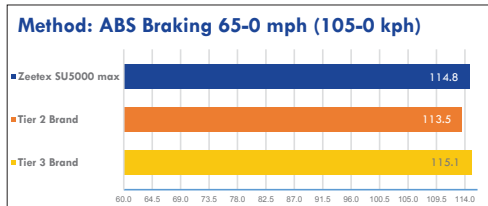
Internal Noise on Rough Road @ 37.2 mph (60 kph)



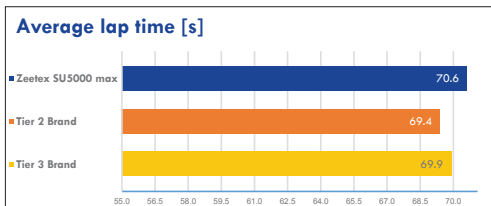
Internal Noise on Rough Road @ 49.7 mph (80 kph)



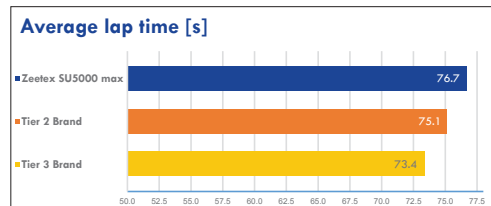
Dry Braking Distance in Feet



Dry Handling



Wet Handling



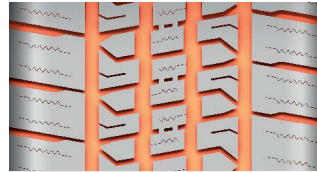
For 4x4's on Highway Terrain

SUMMER

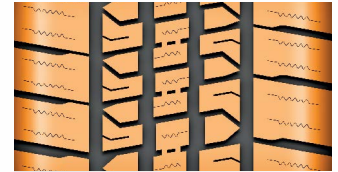
HT1000



Ultra-modern "variable pitch" tread design offers low noise, meant for highway terrain.



Wider circumferential grooves & lateral grooves evacuate water quickly defeating aquaplaning phenomena.



Wavy sipes leading to outstanding braking performance on wet conditions & delivers enhanced ride comfort.

Series	Size	Load Index / Speed Symbol	Max. Load	Max. Inflation Pressure	Rim Width	Section Width	Overall Diameter	Tread Depth			
			kgs	psi	inches	mm	mm	mm			
75	265/75R16	116T	1250	51	7.5	267	804	9.3	D	C	72dB/B
70	215/70R16	100H	800	51	6.5	221	708	8.5	D	C	69dB/B
	225/70R16	103S	875	51	6.5	228	722	8.5	D	C	71dB/B
	235/70R16	106T	950	51	7.0	240	736	8.5	D	C	71dB/B
	245/70R16	107H	975	51	7.0	248	750	8.5	D	C	71dB/B
	265/70R16	112H	1120	51	8.0	272	778	8.5	D	C	72dB/B
	275/70R16	114T	1180	51	8.0	279	792	9.3	D	C	72dB/B
	245/70R17	110T	1060	51	7.0	248	776	8.5	D	C	71dB/B
	265/70R17	115H	1215	51	8.0	272	804	10.0	D	C	72dB/B
65	235/65R16	103H	875	51	7.0	240	712	8.5	D	C	71dB/B
	225/65R17	102H	850	51	7.0	228	724	8.5	D	C	71dB/B
	265/65R17	112H	1120	51	8.0	272	776	9.3	D	C	72dB/B
	275/65R17	115H	1215	51	8.0	279	790	9.3	D	C	72dB/B
	285/65R17	116H	1250	51	8.5	292	802	9.3	D	C	72dB/B

For 4x4's on Highway Terrain

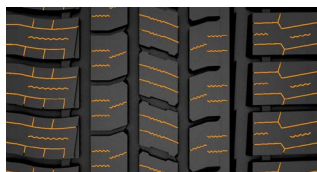
SUMMER

HT5000 max

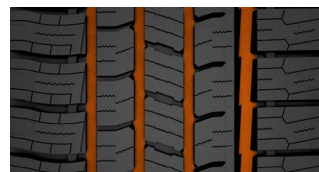
This next-gen highway terrain tyre is a trendsetter that features a unique asymmetrical pattern & a distinct sidewall design uncommon for a 4x4 tyre. The HT5000 max is designed to maximize stability & handling while offering extra grip & a silent drive.



A unique asymmetrical tread design with a distinct sidewall enhances the appearance of any 4x4 vehicle.



Zigzag, multi-wave, & straight sipes increase grip on wet & dry roads.



Four circumferential main grooves offer better stability, handling & reduce noise while driving on highways.

Series	Size	Load Index / Speed Symbol	Max. Load	Max. Inflation Pressure	Rim Width	Section Width	Overall Diameter	Tread Depth	C	C	ABC
			kgs	psi	inches	mm	mm	mm			
75	245/75R16	111T	1090	44	7.0	248	769	8.5	C	C	71dB/B
	265/75R16	116T	1250	44	7.5	267	799	8.5	C	C	72dB/B
70	215/70R16	100H	800	44	6.5	221	703	8.5	C	C	71dB/B
	225/70R16	103H	875	44	6.5	228	717	8.5	C	C	71dB/B
	235/70R16	106H	950	44	7.0	240	731	8.5	C	C	71dB/B
	245/70R16	111H XL	1090	50	7.0	248	745	8.5	C	C	72dB/B
	255/70R16	111H	1090	44	7.5	260	759	8.5	C	C	72dB/B
	265/70R16	112H	1120	44	8.0	272	773	8.5	C	C	72dB/B
	265/70R17	115H	1215	44	8.0	272	799	8.5	C	C	72dB/B
	255/70R18	113H	1150	44	7.5	260	810	8.5	C	C	72dB/B
65	265/70R18	116H	1250	44	8.0	272	829	8.5	C	C	72dB/B
	245/65R17	111H XL	1090	50	7.0	248	745	8.5	C	C	72dB/B
	265/65R17	112H	1120	44	8.0	272	771	8.5	C	C	72dB/B
	275/65R17	115H	1215	44	8.0	279	790	8.0	C	C	72dB/B
	285/65R17	116H	1250	44	8.5	292	802	8.3	C	C	72dB/B
	265/65R18	114H	1180	44	8.0	272	796	8.5	C	C	72dB/B

For 4x4's on Highway Terrain

SUMMER

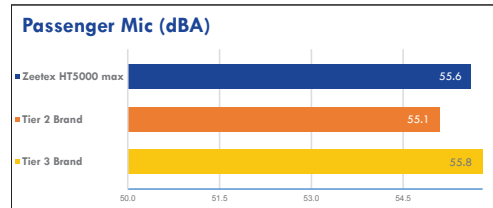
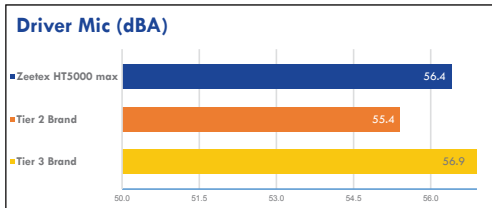
HT5000 max



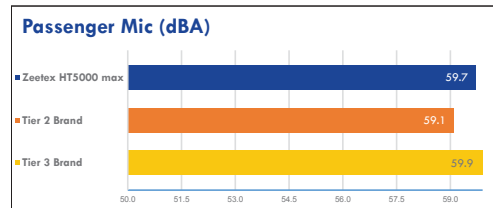
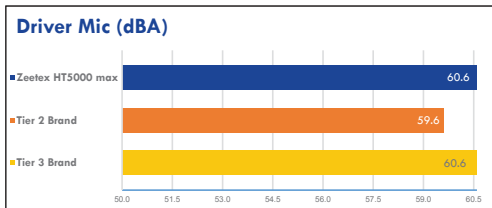
Performance results against Tier 2 & Tier 3 brands tested in IDIADA, Spain

Tire size tested: 265/65R17 112H

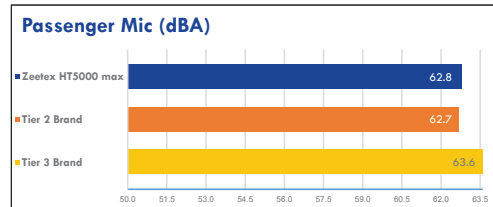
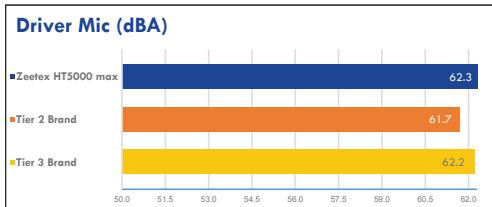
Internal Noise on Smooth Road @ 37.2 mph (60 kph)



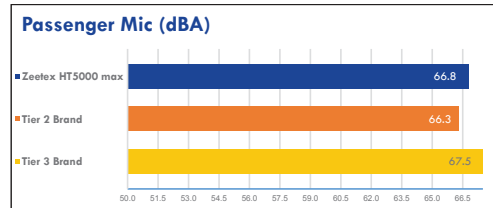
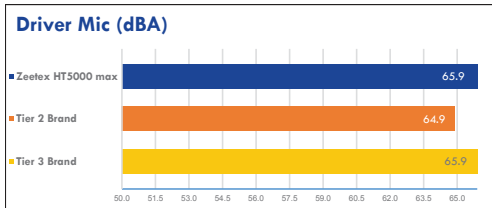
Internal Noise on Smooth Road @ 49.7 mph (80 kph)



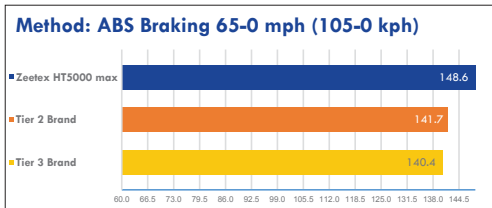
Internal Noise on Rough Road @ 37.2 mph (60 kph)



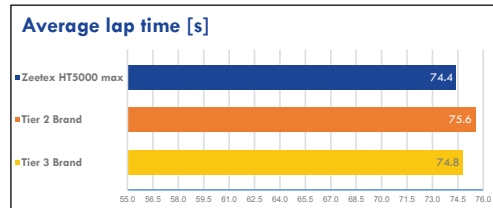
Internal Noise on Rough Road @ 49.7 mph (80 kph)



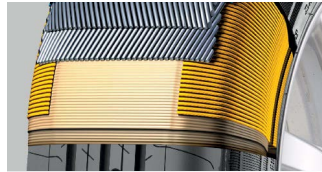
Dry Braking Distance in Feet



Dry Handling



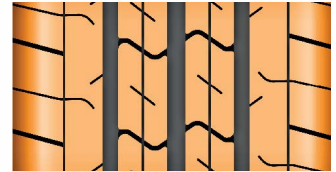
CT1000



Most rugged casing construction to withstand severe load; superior compounding ensures longer mileage



Shoulders' profile ensures flat footprint, thereby offering extraordinary resistance against irregular wear



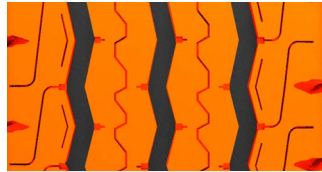
Extremely good handling & road grip in both dry & wet conditions

Series	Size	PR	Load Index / Speed Symbol	Max Load (Single)	Max Load (Dual)	Max. Inflation Pressure	Rim Width	Section Width	Overall Diameter	Tread Depth			
				kgs	kgs	psi	inches	mm	mm	mm			
LTRC	185R14C	8	102/100S	850	800	65	5.5	188	653	10.0	C	B	71dB/B
	195R14C	8	106/104S	950	900	65	5.5	198	666	9.0	C	B	71dB/B
	195R15C	8	106/104Q	950	900	65	5.5	198	690	9.0	C	B	71dB/B

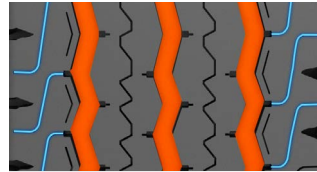
Upcoming sizes

Series	Size	Load Index / Speed Symbol
75	185/75R16C	104/102S
	195/75R16C	107/105S
70	165/70R14C	89/87R
	195/70R15C	104/102R
	225/70R15C	112/110R
65	175/65R14C	90/88T
	195/65R16C	104/102T
	205/65R16C	107/105T
	215/65R16C	109/107T
	225/65R16C	112/110T
	235/65R16C	121/119R

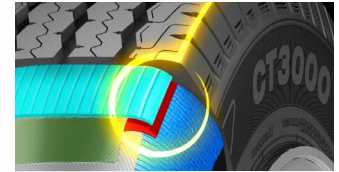
CT3000






Rib type tread design with shoulder lugs provides better cornering, stability & resistance against irregular wear in the most demanding conditions



Circumferential zig-zag grooves & rib sipes give quicker water clearance & provides maximum on-road grip in both wet & dry conditions



Special compound for the belt edge reduces the heat & the rolling resistance during the tyre service

Series	Size	PR	Load Index / Speed Symbol	Max Load (Single)	Max Load (Dual)	Max. Inflation Pressure	Rim Width	Section Width	Overall Diameter	Tread Depth			
				kgs	kgs	psi	inches	mm	mm	mm			
LTRC	195R14C*	8	106/104S	950	900	65	5.5	198	666	9.5	D	A	68dB/A
	195R15C*	8	106/104Q	950	900	65	5.5	198	690	9.7	D	A	68dB/A

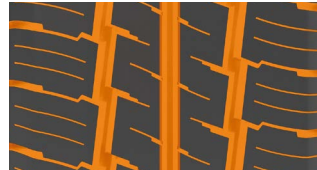
* Available in BSW & WLW sidewall styles

CT5000 max

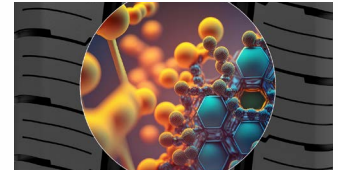
NEW



Robust center ribs & interlocking shoulder blocks
Continuous, solid center ribs & large, interlocking shoulder blocks are engineered to maximize the contact patch stiffness. This design provides superior stability, improved load distribution for carrying heavy payloads, & enhanced steering response critical for commercial applications.



Deep circumferential grooves & multiple sipes optimized for efficient water evacuation, significantly reducing the risk of hydroplaning in wet conditions. The dense pattern of lateral sipes enhances traction by creating numerous biting edges, crucial for reliable performance on wet & dry roads.



Optimized tread compound & block geometry utilizes a uniform block geometry designed to promote even wear across the footprint. This, combined with a durable, optimized compound, results in exceptional tread life & fuel efficiency, making it a cost-effective choice for fleet operations.

Series	Size	PR	Load Index / Speed Symbol	Max Load (Single)	Max Load (Dual)	Max. Inflation Pressure	Rim Width	Section Width	Overall Diameter	Tread Depth			
				kgs	kgs	psi	inches	mm	mm	mm			
LTRC	185R14C	8	102/100T	850	800	65	5.5	188	650	8.8	C	B	72dB/B
	195R14C	8	106/104T	950	900	65	5.5	198	666	8.8	C	B	72dB/B
	195R15C	8	106/104S	950	900	65	5.5	200	690	8.8	C	B	72dB/B
	205R16C	8	110/108T	1060	1000	65	6.0	208	736	8.8	C	B	72dB/B
75	205/75R14C	8	109/107S	1030	975	69	5.5	203	664	8.8	C	B	72dB/B
	205/75R16C	8	110/108T	1060	1000	69	5.5	203	714	8.8	C	B	72dB/B
	205/75R16C	10	113/111T	1150	1090	77	5.5	203	714	8.8	B	B	72dB/B
70	215/70R15C	8	109/107T	1030	975	65	6.5	221	678	8.8	C	B	72dB/B
	225/70R15C	8	112/110T	1120	1060	65	6.5	228	697	9.5	C	B	72dB/B
	215/70R16C	8	108/106T	1000	950	55	6.5	221	708	8.8	C	B	72dB/B
65	215/65R16C	8	109/107T	1030	975	69	6.5	221	681	8.8	C	B	72dB/B
	235/65R16C	8	115/113T	1215	1150	69	7.0	240	712	8.8	B	B	72dB/B
	235/65R16C	10	121/119R	1450	1360	83	7.0	240	712	8.8	B	B	72dB/B

ALL SEASON



For Passenger Cars

ALL SEASON



ZT8000 4S



Optimized performance in Wet, Dry & snow conditions due to V-shape design with deeper grooves that improves water distribution.



Variable sipes in different directions help in enhanced braking performance particularly on snow.



Delivers outstanding traction with the unique design of grooves & shapes of the sipes.

Series	Size	Load Index / Speed Symbol	Max. Load	Max. Inflation Pressure	Rim Width	Section Width	Overall Diameter	Tread Depth	D	B	70dB/B
			kgs	psi	inches	mm	mm	mm			
80	155/80R13	79T	437	36	4.5	157	578	7.5	D	B	70dB/B
	155/70R13	75T	387	36	4.5	157	548	7.5	D	B	70dB/B
70	165/70R13	79T	437	36	5.0	170	562	7.5	D	B	70dB/B
	175/70R13	82T	475	36	5.0	177	576	7.5	D	B	70dB/B
	165/70R14	81T	462	36	5.0	170	588	7.5	D	B	70dB/B
	175/70R14	88T XL	560	36	5.0	177	602	8.0	D	B	71dB/B
	215/70R16	104H XL	900	42	6.5	221	708	8.0	D	B	72dB/B
	235/70R16	106H	950	36	7.0	240	736	8.0	D	B	71dB/B
65	155/65R14	75T	387	36	4.5	157	558	7.5	D	B	70dB/B
	165/65R14	79T	437	36	5.0	170	570	7.5	D	B	70dB/B
	175/65R14	82T	475	36	5.0	177	584	8.0	D	B	70dB/B
	185/65R14	86T	530	36	5.5	189	596	8.0	D	B	70dB/B
	175/65R15	84T	500	36	5.0	177	609	8.0	D	B	70dB/B
	185/65R15	88H	560	36	5.5	189	621	8.0	D	B	70dB/B
	195/65R15	91V	615	36	6.0	201	635	8.0	D	B	71dB/B
	205/65R15	94H	670	36	6.0	209	647	8.0	D	B	71dB/B
	215/65R16	98H	750	36	6.5	221	686	8.0	D	B	71dB/B
	225/65R17	102H	850	36	6.5	228	724	8.0	D	B	71dB/B
60	245/65R17	107T	975	36	7.0	248	750	8.0	D	B	71dB/B
	275/65R18	116T	1250	36	8.0	279	815	8.0	D	B	72dB/B
	165/60R14	75T	387	36	5.0	170	554	7.5	D	B	70dB/B
	185/60R14	82T	475	36	5.5	189	578	8.0	D	B	70dB/B
	165/60R15	77T	412	36	5.0	170	579	8.0	D	B	70dB/B
	185/60R15	88H XL	560	42	5.5	189	603	8.0	D	B	71dB/B
	195/60R15	88H	560	36	6.0	201	615	8.0	D	B	71dB/B
	205/60R15	91H	615	36	6.0	209	627	8.0	D	B	71dB/B
	205/60R16	96H XL	710	42	6.0	209	652	8.0	D	B	72dB/B
	215/60R16	99H XL	775	36	6.5	221	664	8.0	D	B	72dB/B
	225/60R16	98H	750	36	6.5	228	676	8.0	D	B	71dB/B
	55	215/60R17	96H	710	36	6.5	221	690	8.0	D	B
225/60R17		99V	775	36	6.5	228	702	8.0	D	B	71dB/B
235/60R18		107H XL	975	42	7.0	240	739	8.0	D	B	72dB/B
185/55R15		82H	475	36	6.0	194	585	8.0	D	B	70dB/B
195/55R15		85H	515	36	6.0	201	595	8.0	D	B	71dB/B
195/55R16		91H XL	615	42	6.0	201	620	8.0	D	B	72dB/B

For Passenger Cars

ALL SEASON



ZT8000 4S

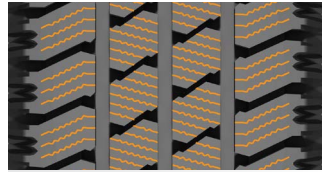
Series	Size	Load Index / Speed Symbol	Max. Load	Max. Inflation Pressure	Rim Width	Section Width	Overall Diameter	Tread Depth			
			kgs	psi	inches	mm	mm	mm			
55	205/55R16	94V XL	670	42	6.5	214	632	8.0	D	B	72dB/B
	215/55R16	97V XL	730	42	7.0	226	642	8.0	D	B	72dB/B
	225/55R16	95H	690	36	7.0	233	654	8.0	D	B	71dB/B
	205/55R17	95V XL	690	42	6.5	214	658	8.0	D	B	72dB/B
	215/55R17	98H XL	750	42	7.0	226	668	8.0	D	B	72dB/B
	225/55R17	101H XL	825	42	7.0	233	680	8.0	D	B	72dB/B
	235/55R17	103H XL	875	42	7.5	245	690	8.0	D	B	72dB/B
	235/55ZR19	105W XL	925	42	7.5	245	741	8.0	D	B	72dB/B
50	195/50R15	86H XL	530	36	6.0	201	577	8.0	D	B	72dB/B
	205/50R17	93V XL	650	36	6.5	214	638	8.0	D	B	72dB/B
	225/50R17	98V XL	750	42	7.0	233	658	8.0	D	B	72dB/B
	235/50R18	101V XL	825	42	7.5	245	693	8.0	D	B	72dB/B
45	205/45ZR17	88W XL	560	42	7.0	206	616	8.0	D	B	72dB/B
	225/45ZR17	94W XL	670	42	7.5	225	634	8.0	D	B	72dB/B
	225/45ZR18	95W XL	690	42	7.5	225	659	8.0	D	B	72dB/B
	235/45ZR18	98W XL	750	42	8.0	236	669	8.0	D	B	72dB/B
	245/45ZR18	100W XL	800	42	8.0	243	677	8.0	D	B	72dB/B
	225/45ZR19	96W XL	710	42	7.5	225	685	8.0	D	B	72dB/B
40	225/40ZR18	92W XL	630	42	8.0	230	637	8.0	D	B	72dB/B
	245/40ZR18	97W XL	730	42	8.5	248	653	8.0	D	B	72dB/B
35	225/35ZR19	88W XL	560	42	8.0	230	641	8.0	D	B	72dB/B
	235/35ZR19	91W XL	615	42	8.5	241	647	8.0	D	B	72dB/B
30	295/30ZR22	103W XL	875	42	10.5	301	737	8.0	D	B	75dB/B

For Vans & Transport Vehicles

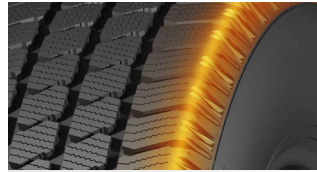
ALL SEASON



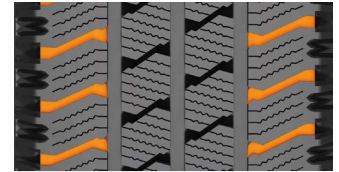
CT8000 4S



Sinusoidal sipes on all tread blocks & shoulders deliver enhanced dry, wet & snow braking.



Square-edged shoulders with sharp cuts provide optimal footprint to maintain stability & improved handling.



Wide open shoulder channels help to slush away water & snow providing extraordinary grip in all seasons.

Series	Size	PR	Load Index / Speed Symbol	Max Load (Single)	Max Load (Dual)	Max. Inflation Pressure	Rim Width	Section Width	Overall Diameter	Tread Depth	D	B	A B C
				kgs	kgs	psi	inches	mm	mm	mm			
75	195/75R16C	8	107/105R	975	925	65	5.5	196	694	8.5	D	B	72dB/B
	215/75R16C	8	113/111R	1150	1090	65	6.0	217	724	8.5	D	B	72dB/B
70	195/70R15C	10	104/101R	900	825	80	6.0	209	651	8.5	D	B	72dB/B
	215/70R15C	8	109/107R	1030	975	65	6.5	222	679	8.5	D	B	72dB/B
65	225/70R15C	10	112/109R	1120	1030	80	6.5	236	694	8.5	D	B	72dB/B
	205/65R16C	8	107/105T	975	925	65	6.0	210	668	8.5	D	B	72dB/B
	215/65R15C	10	107/103R	975	875	80	6.5	228	657	8.5	D	B	72dB/B
	225/65R16C	10	111/108R	1090	1000	80	6.5	234	694	8.5	D	B	72dB/B
	235/65R16C	8	115/113R	1215	1150	65	7.0	242	708	9.0	D	B	72dB/B

STUDLESS WINTER

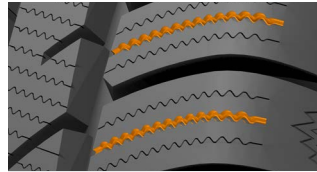




WP1000



Uni-directional tread design with slanting edges on inner ribs & shoulder blocks flings away water & slush giving outstanding traction.



Variable sipes in different directions help in enhanced braking performance particularly on snow.



Zigzag circumferential grooves create biting block edges to provide deep snow traction.

Series	Size	Load Index / Speed Symbol	Max. Load	Max. Inflation Pressure	Rim Width	Section Width	Overall Diameter	Tread Depth	C	B	ABC
			kgs	psi	inches	mm	mm	mm			
80	155/80R13	79T	437	44	4.5	157	578	8.1	C	B	71dB/B
	155/70R13	75T	387	44	4.5	157	548	8.1	C	B	71dB/B
	175/70R13	82T	475	44	5.0	177	576	8.3	C	B	71dB/B
	165/70R14	81T	462	44	5.0	170	588	8.1	C	B	71dB/B
	175/70R14	84T	500	44	5.0	177	602	8.3	C	B	71dB/B
	175/70R14	88T XL	560	50	5.0	177	602	8.3	C	B	71dB/B
	185/70R14	88T	560	44	5.5	189	616	8.3	C	B	71dB/B
65	155/65R14	75T	387	44	4.5	157	558	8.1	C	B	71dB/B
	165/65R14	79T	437	44	5.0	170	570	8.1	C	B	71dB/B
	175/65R14	82T	475	44	5.0	177	584	8.3	C	B	71dB/B
	175/65R14	86T XL	530	50	5.0	177	584	8.3	C	B	71dB/B
	185/65R14	86T	530	44	5.5	189	596	8.3	C	B	71dB/B
	145/65R15	72T	355	44	4.5	150	569	8.1	C	B	71dB/B
	165/65R15	81T	462	44	5.0	170	595	8.1	C	B	71dB/B
	175/65R15	84T	500	44	5.0	177	609	8.3	C	B	71dB/B
	185/65R15	88H	560	44	5.5	189	621	8.3	C	B	71dB/B
	185/65R15	92T XL	630	50	5.5	189	621	8.3	C	B	71dB/B
	195/65R15	91T	615	44	6.0	201	635	8.5	C	B	72dB/B
	195/65R15	91H	615	44	6.0	201	635	8.5	C	B	72dB/B
	195/65R15	95H XL	690	50	6.0	201	635	8.5	C	B	72dB/B
	205/65R15	94H	670	44	6.0	209	647	8.5	C	B	72dB/B
	205/65R15	99H XL	775	50	6.0	209	647	8.5	C	B	72dB/B
	215/65R16	98H	750	44	6.5	221	686	8.5	C	B	72dB/B
	215/65R16	102H XL	850	50	6.5	221	686	8.5	C	B	72dB/B
215/65R17	99V	775	44	6.5	221	712	8.7	C	B	72dB/B	
60	185/60R14	82T	475	44	5.5	189	578	8.3	C	B	71dB/B
	185/60R15	84H	500	44	5.5	189	603	8.3	C	B	71dB/B
	185/60R15	88H XL	560	50	5.5	189	603	8.3	C	B	71dB/B
	195/60R15	88T	560	44	6.0	201	615	8.5	C	B	72dB/B
	195/60R16	89H	580	44	6.0	201	640	8.5	C	B	72dB/B
	205/60R16	92H	630	44	6.0	209	652	8.5	C	B	72dB/B
	205/60R16	96H XL	710	50	6.0	209	652	8.5	C	B	72dB/B
	215/60R16	99H XL	775	50	6.5	221	664	8.5	C	B	72dB/B
225/60R16	102V XL	850	50	6.5	228	676	8.5	C	B	72dB/B	

For Passenger Cars

STUDLESS WINTER



WP1000

Series	Size	Load Index / Speed Symbol	Max. Load	Max. Inflation Pressure	Rim Width	Section Width	Overall Diameter	Tread Depth			
			kgs	psi	inches	mm	mm	mm			
55	185/55R15	82H	475	44	6.0	194	585	8.3	C	B	71dB/B
	185/55R15	86H XL	530	50	6.0	194	585	8.3	C	B	71dB/B
	195/55R15	85H	515	44	6.0	201	595	8.5	C	B	72dB/B
	195/55R15	89H XL	580	50	6.0	201	595	8.5	C	B	72dB/B
	195/55R16	87H	545	44	6.0	201	620	8.5	C	B	72dB/B
	195/55R16	87T	545	44	6.0	201	620	8.5	C	B	72dB/B
	195/55R16	91H XL	615	50	6.0	201	620	8.5	C	B	72dB/B
50	195/50R15	82H	475	44	6.0	201	577	8.5	C	B	72dB/B
	195/50R15	86H XL	530	50	6.0	201	577	8.5	C	B	72dB/B
	195/50R16	88H XL	560	50	6.0	201	602	8.5	C	B	72dB/B

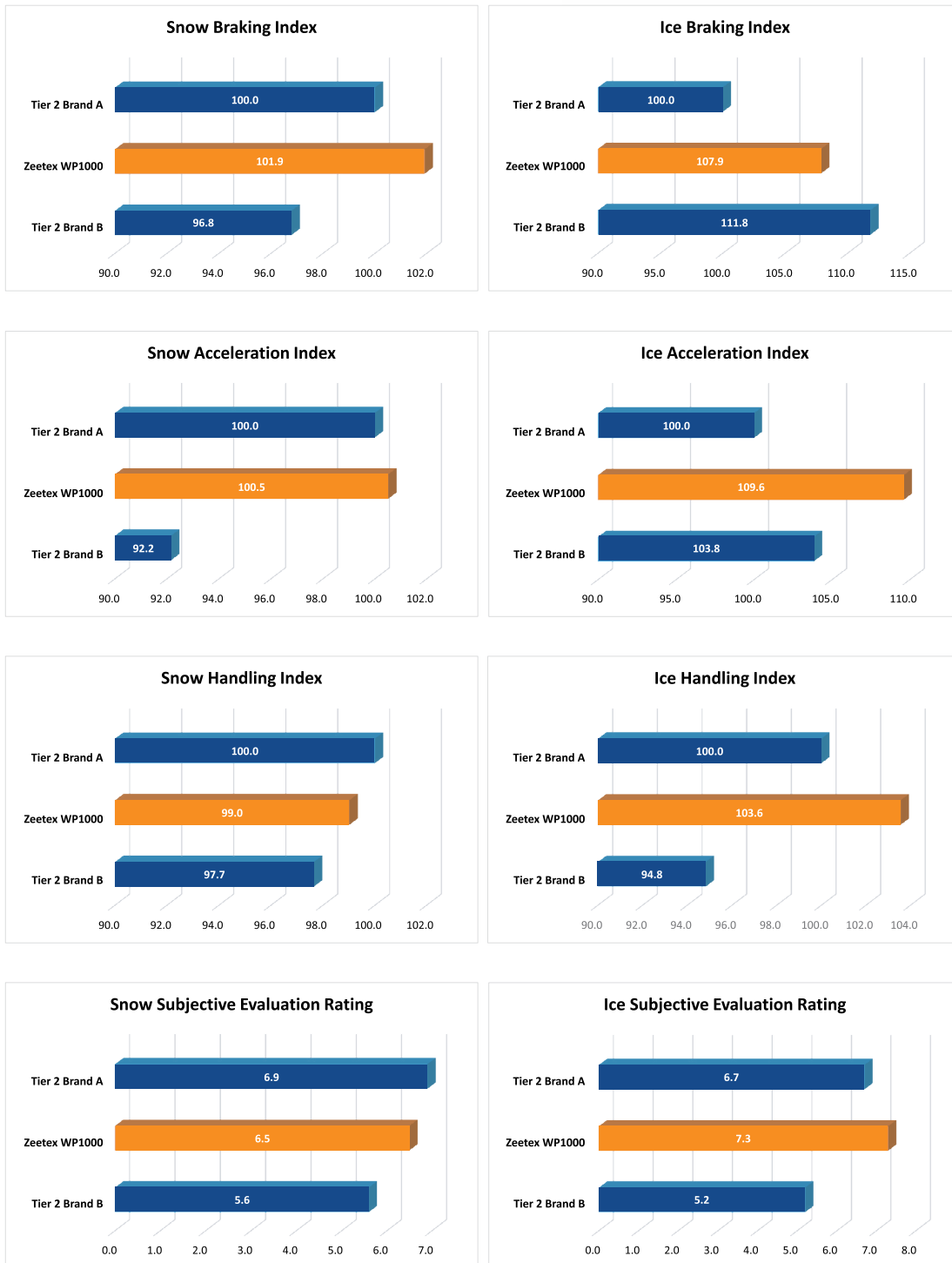


WP1000

Performance results against Tier 2 brands tested in UTAC, Finland

Tyre size tested: 195/65R15 91H

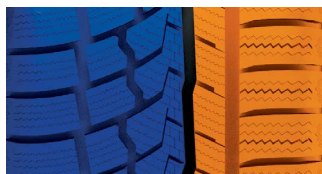
In all the graphs below, the longer the bar, the better the performance of the tyre



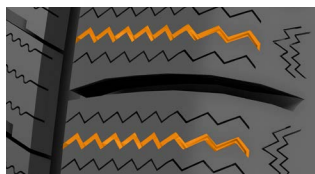
*Subjective Evaluation Parameters: Steering, Controllability, Acceleration & Deceleration



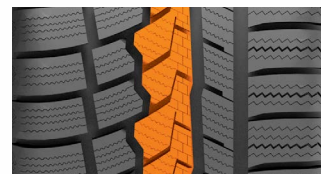
WH1000



Asymmetrical tread design that gives unmatched grip & handling in severe winter conditions.



Self-locking 3D sipes on shoulder blocks improve block stiffness & ensure better grip on snow & ice.



Center block rib with unique combination of straight & sinusoidal sipes helps in providing extra stability at high speeds.

Series	Size	Load Index / Speed Symbol	Max. Load	Max. Inflation Pressure	Rim Width	Section Width	Overall Diameter	Tread Depth	D	C	A B C
			kgs	psi	inches	mm	mm	mm			
60	215/60R17	100H XL	800	50	6.5	221	690	8.7	D	C	72dB/B
	205/55R16	91H	615	50	6.5	214	632	8.5	D	C	72dB/B
55	205/55R16	94V XL	670	50	6.5	214	632	8.5	D	C	72dB/B
	215/55R16	97H XL	730	50	7.0	226	642	8.5	D	C	72dB/B
	215/55R16	97V XL	730	50	7.0	226	642	8.5	D	C	72dB/B
	225/55R16	99H XL	775	50	7.0	233	654	8.5	D	C	72dB/B
	225/55R16	99V XL	775	50	7.0	233	654	8.5	D	C	72dB/B
	205/55R17	95V XL	690	50	6.5	214	658	8.5	D	C	72dB/B
	215/55R17	98V XL	760	50	7.0	226	668	8.5	D	C	72dB/B
	225/55R17	97H	730	50	7.0	233	680	8.5	D	C	72dB/B
	225/55R17	101V XL	825	50	7.0	233	680	8.5	D	C	72dB/B
	225/55R19	99V	775	50	7.0	233	731	8.5	D	C	72dB/B
50	205/50R17	93H XL	650	50	6.5	214	638	8.2	D	C	72dB/B
	205/50R17	93V XL	650	50	6.5	214	638	8.2	D	C	72dB/B
	215/50R17	95V XL	690	50	7.0	226	648	8.5	D	C	72dB/B
	225/50R17	94V	670	50	7.0	233	658	8.5	D	C	72dB/B
	225/50R17	98V XL	750	50	7.0	233	658	8.5	D	C	72dB/B
	235/50R17	100V XL	800	50	7.5	245	668	8.5	D	C	72dB/B
	225/50R18	99V XL	775	50	7.0	233	683	8.5	D	C	72dB/B
	235/50R18	101V XL	825	50	7.5	245	693	8.2	D	C	72dB/B
45	235/50R19	103V XL	875	50	7.5	245	719	8.2	D	C	72dB/B
	195/45R16*	84H XL	500	50	6.5	195	582	8.2	D	C	72dB/B
	205/45R17	88V XL	560	50	7.0	206	616	8.2	D	C	72dB/B
	215/45R17	91V XL	615	50	7.0	213	626	8.2	D	C	72dB/B
	225/45R17	94H XL	670	50	7.5	225	634	8.2	D	C	72dB/B
	225/45R17	94V XL	670	50	7.5	225	634	8.2	D	C	72dB/B
	235/45R17	97H XL	730	50	8.0	236	644	8.2	D	C	72dB/B
	235/45R17	97V XL	730	50	8.0	236	644	8.2	D	C	72dB/B
	245/45R17	99V XL	775	50	8.0	243	652	8.2	D	C	72dB/B
	225/45R18	95V XL	690	50	7.5	225	659	8.2	D	C	72dB/B
	235/45R18	98V XL	750	50	8.0	236	669	8.2	D	C	72dB/B
	245/45R18	100V XL	800	50	8.0	243	677	8.2	D	C	72dB/B
	225/45R19	96V XL	710	50	7.5	225	685	8.2	D	C	72dB/B
	235/45R19	99V XL	775	50	8.0	236	695	8.2	D	C	72dB/B
245/45R19	102V XL	850	50	8.0	243	703	8.2	D	C	72dB/B	

For High-performance & Luxury Vehicles

STUDLESS WINTER



WH1000

Series	Size	Load Index / Speed Symbol	Max. Load	Max. Inflation Pressure	Rim Width	Section Width	Overall Diameter	Tread Depth			
			kgs	psi	inches	mm	mm	mm			
40	225/40R18	92V XL	630	50	8.0	230	637	8.2	D	C	72dB/B
	235/40R18	95V XL	690	50	8.5	241	645	8.2	D	C	72dB/B
	245/40R18	97V XL	730	50	8.5	248	653	8.2	D	C	72dB/B
	235/40R19*	96V XL	710	50	8.5	241	671	8.2	D	C	72dB/B
	245/40R19	98V XL	750	50	8.5	248	679	8.2	D	C	72dB/B
35	255/40R19	100V XL	800	50	9.0	260	687	8.2	D	C	73dB/B
	235/35R19	91W XL	615	50	8.5	241	647	8.0	D	C	72dB/B
	255/35R19	96V XL	710	50	9.0	260	661	8.0	D	C	73dB/B

* Newly added sizes

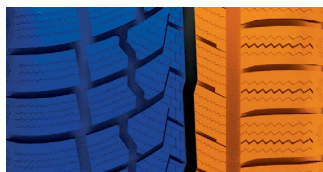
* Newly added sizes

For Crossovers & Sports Utility Vehicles

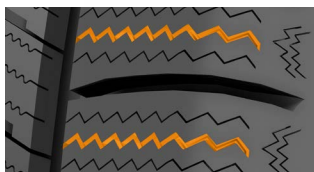
STUDLESS WINTER



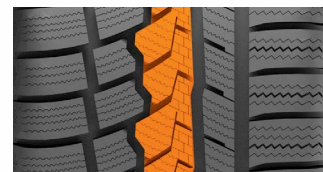
WH1000 SUV



Asymmetrical tread design that gives unmatched grip & handling in severe winter conditions.



Self-locking 3D sipes on shoulder blocks improve block stiffness & ensure better grip on snow & ice.



Center block rib with unique combination of straight & sinusoidal sipes helps in providing extra stability at high speeds.

Series	Size	Load Index / Speed Symbol	Max. Load	Max. Inflation Pressure	Rim Width	Section Width	Overall Diameter	Tread Depth	D	C	ABC
			kgs	psi	inches	mm	mm	mm			
65	225/65R17	102H	850	50	6.5	228	724	9.4	D	C	72dB/B
	225/65R17	106H XL	950	50	6.5	228	724	9.4	D	C	72dB/B
	235/65R17	108H XL	1000	50	7.0	240	738	9.4	D	C	72dB/B
	255/65R17	114H XL	1180	50	7.5	260	764	8.7	D	C	73dB/B
60	235/60R16	100H	800	50	7.0	240	688	8.7	D	C	72dB/B
	235/60R16	104H XL	900	50	7.0	240	688	8.7	D	C	72dB/B
	225/60R17	99V	775	50	6.5	228	702	8.7	D	C	72dB/B
	225/60R17	103H XL	875	50	6.5	228	702	8.7	D	C	72dB/B
	235/60R17	106H XL	950	50	7.0	240	714	8.7	D	C	72dB/B
	225/60R18	104H XL	900	50	6.5	228	727	8.7	D	C	72dB/B
	225/60R18	104V XL	900	50	6.5	228	727	8.7	D	C	72dB/B
	235/60R18	107H XL	975	50	7.0	240	739	8.7	D	C	72dB/B
	235/60R18	107V XL	975	50	7.0	240	739	8.7	D	C	72dB/B
	55	235/55R17	103V XL	875	50	7.5	245	690	8.2	D	C
215/55R18		99V XL	775	50	7.0	226	693	8.5	D	C	72dB/B
225/55R18		102H XL	850	50	7.0	233	705	8.5	D	C	72dB/B
225/55R18		102V XL	850	50	7.0	233	705	8.5	D	C	72dB/B
235/55R18		104H XL	900	50	7.5	245	715	8.5	D	C	72dB/B
255/55R18		109V XL	1030	50	8.0	265	737	8.5	D	C	73dB/B
45	235/55R19	105V XL	925	50	7.5	245	741	8.2	D	C	72dB/B
	255/45R20	105V XL	925	50	8.5	255	738	8.2	D	C	73dB/B
35	295/35R21*	107V XL	975	50	10.5	301	739	8.2	D	C	75dB/B

* Newly added sizes

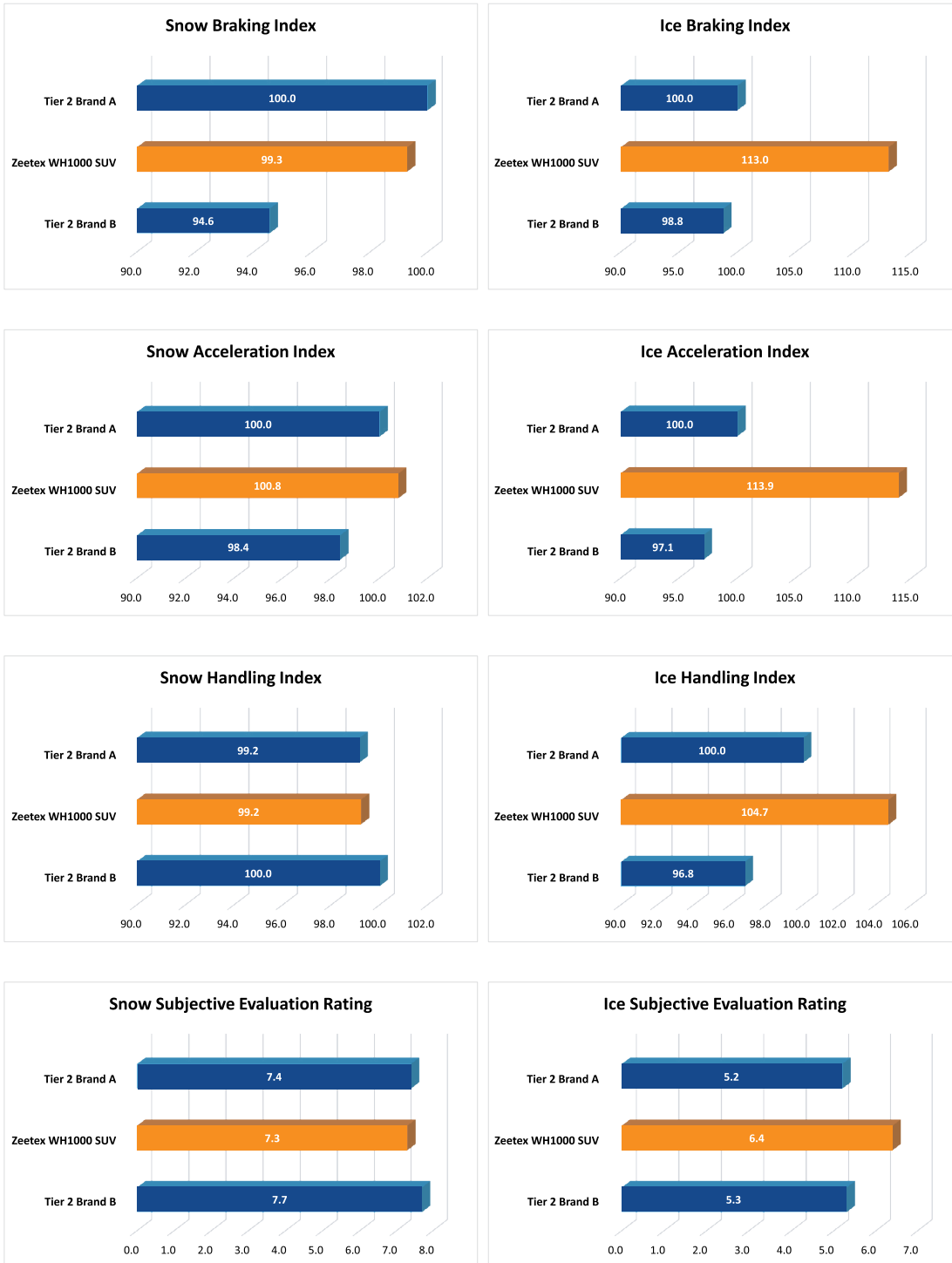


WH1000 SUV

Performance results against Tier 2 brands tested in UTAC, Finland

Tyre size tested: 255/55R18 109V XL

In all the graphs below, the longer the bar, the better the performance of the tire



*Subjective Evaluation Parameters: Steering, Controllability, Acceleration & Deceleration

For 4x4's on Highway Terrain

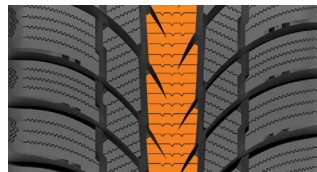
STUDLESS WINTER



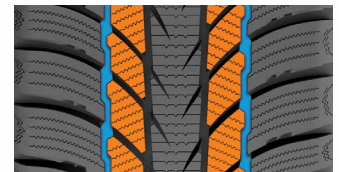
WQ1000



Aggressive V shaped Unidirectional tread design that offers excellent drainage of snow & slush.



Wide center rib with uniquely shaped sipes offers unparalleled safety & braking performance.



Rugged blocks with zigzag grooves prevent sliding on ice & snow.

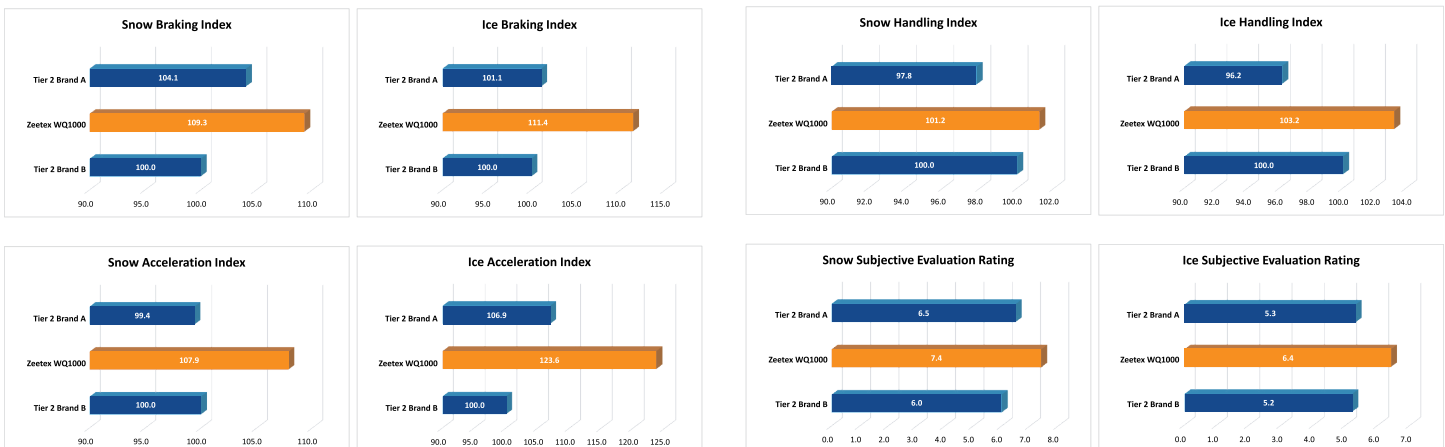
Series	Size	Load Index / Speed Symbol	Max. Load	Max. Inflation Pressure	Rim Width	Section Width	Overall Diameter	Tread Depth	D	B	72dB/B
			kgs	psi	inches	mm	mm	mm			
70	215/70R16	100H	800	44	6.5	221	708	9,1	D	B	72dB/B
60	265/60R18*	114H XL	1180	50	8.0	272	775	9,1	D	B	73dB/B

* Newly added sizes

Performance results against Tier 2 brands tested in UTAC, Finland

Tyre size tested: 265/65R17 112H

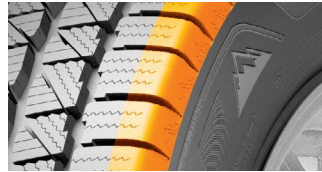
In all the graphs below, the longer the bar, the better the performance of the tyre



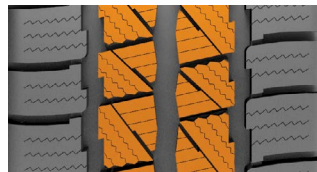
*Subjective Evaluation Parameters: Steering, Controllability, Acceleration & Deceleration



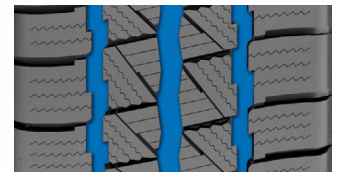
WV1000



Square shoulders ensure optimal footprint increasing the contact area for extra traction & control on snow & ice.



Rugged, aggressive & uniquely shaped blocks on inner ribs deliver superior grip on snow & ice.



Wider circumferential grooves flush out water & snow quickly improving traction.

Series	Size	PR	Load Index / Speed Symbol	Max Load (Single)	Max Load (Dual)	Max. Inflation Pressure	Rim Width	Section Width	Overall Diameter	Tread Depth			
				kgs	kgs	psi	inches	mm	mm	mm			
75	185/75R16C	8	104/102R	900	850	69	5.0	184	684	9.0	D	B	73dB/B
	195/75R16C	8	107/105S	975	925	69	5.5	196	698	9.7	D	B	73dB/B
	195/75R16C	10	110/108R	1060	1000	76	5.5	196	698	9.7	D	B	73dB/B
	205/75R16C	10	113/111S	1150	1090	76	5.5	203	714	9.7	D	B	73dB/B
	215/75R16C	8	113/111R	1150	1090	69	6.0	216	728	9.5	D	B	73dB/B
	215/75R16C	10	116/114R	1250	1180	76	6.0	216	728	9.5	D	B	73dB/B
70	225/75R16C	10	121/120R	1450	1400	83	6.0	223	744	9.7	D	B	73dB/B
	195/70R15C	8	104/102S	900	850	65	6.0	201	655	9.5	D	B	73dB/B
	215/70R15C	8	109/107S	1030	975	65	6.5	221	683	10.0	D	B	73dB/B
65	225/70R15C	8	112/110S	1120	1060	65	6.5	228	697	9.5	D	B	73dB/B
	215/65R15C	6	104/102T	900	850	54	6.5	221	661	9.3	D	B	73dB/B
	195/65R16C	8	104/102T	900	850	69	6.0	201	660	10.0	D	B	73dB/B
	205/65R16C	8	107/105T	975	925	69	6.0	209	672	9.5	D	B	73dB/B
	215/65R16C	8	109/107R	1030	975	69	6.5	221	686	10.0	D	B	73dB/B
	225/65R16C	8	112/110R	1120	1060	69	6.5	228	698	9.3	D	B	73dB/B
	235/65R16C	8	115/113R	1215	1150	69	7.0	240	712	10.0	D	B	73dB/B
60	235/65R16C	10	121/119R	1450	1360	83	7.0	240	712	10.0	D	B	73dB/B
	195/60R16C	6	99/97T	775	730	54	6.0	201	640	9.0	D	B	73dB/B



WV1000

Performance results against Tier 2 brands tested in UTAC, Finland

Tyre size tested: 235/65R16C 115/113R

In all the graphs below, the longer the bar, the better the performance of the tyre



eu.zeetex.com



ZEETEX